



BHD
Storage Solutions

PRODUCT CATALOGUE

Durable, customizable, and cost-effective,
our solutions ensure reliability and efficiency.

ABOUT US

MANUFACTURING CENTER

BHD is one of the leading suppliers of a comprehensive range of Warehouse Storage Equipment in Vietnam.

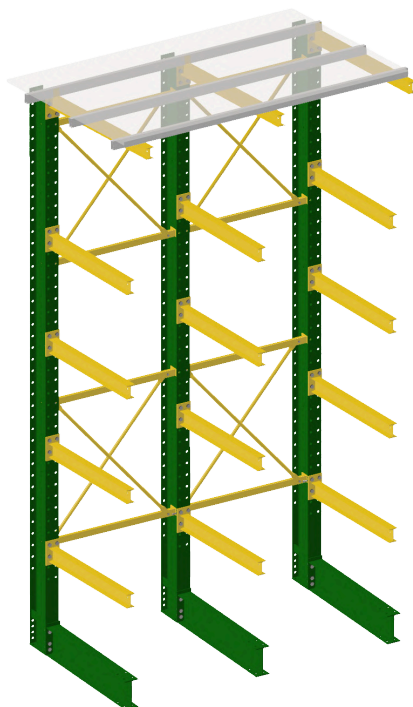
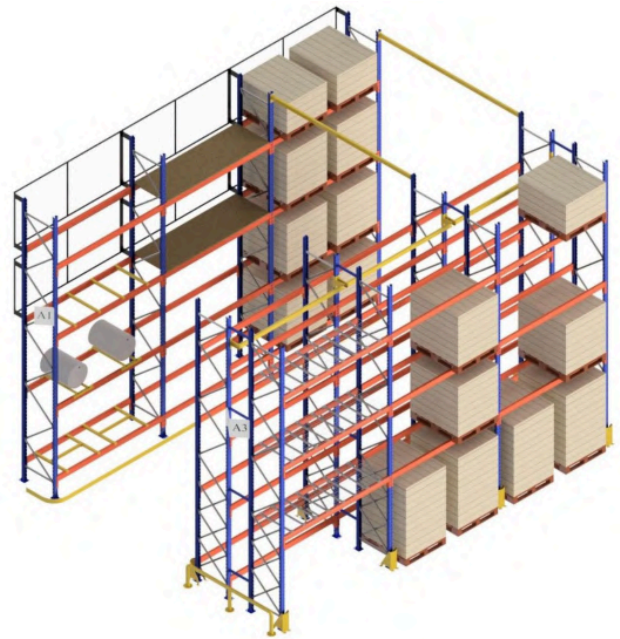


MAIN PRODUCTS



**AMERICAN STANDARD
TEARDROP PALLET RACKING**

**AUSTRALIAN STANDARD
HEAVY DUTY
PALLET RACKING**



CANTILEVER RACKING

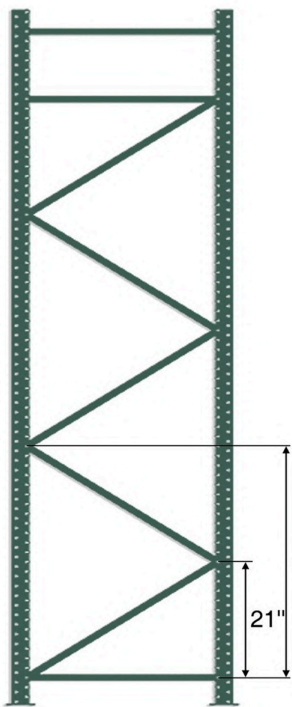


TEARDROP PALLET RACKING

AMERICAN STANDARD TEARDROP PALLET RACKING

Teardrop Pallet Racking offers direct access to each pallet, simple inventory management and versatility. The upright frame and beam are available in multiple sizes and thicknesses offering a wide variety of load-carrying capacities to match your need and application.

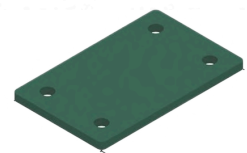
UPRIGHT FRAME



- Easy assembly
- A variety of gauges and lengths
- Optional footplates
- Long-lasting powder coating finish
- Rigid, strong and durable system
- Superior bracing design

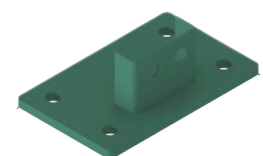


Frame Loading Table (Lbs)				
First Beam Level		3"x3"x14Ga (1.9mm)	3"x3"x13Ga (2.3mm)	3"x3"x12Ga (2.5mm)
(mm)	(inch)			
914.4	36	23,980	28,380	30,580
1066.8	42	22,880	27,280	29,480
1219.2	48	21,780	26,180	28,380
1371.6	54	20,680	25,080	27,280
1524	60	19,580	23,980	26,180
1676.4	66	18,480	22,880	25,080
1828.8	72	17,380	21,780	23,980
1981.2	78	16,280	20,680	22,880
2133.6	84	15,180	19,580	21,780
2286	90	14,080	18,480	20,680
2438.4	96	12,980	17,380	19,580



Welded Baseplate

- 3"x5"
- 5"x8"
- 8"x8"



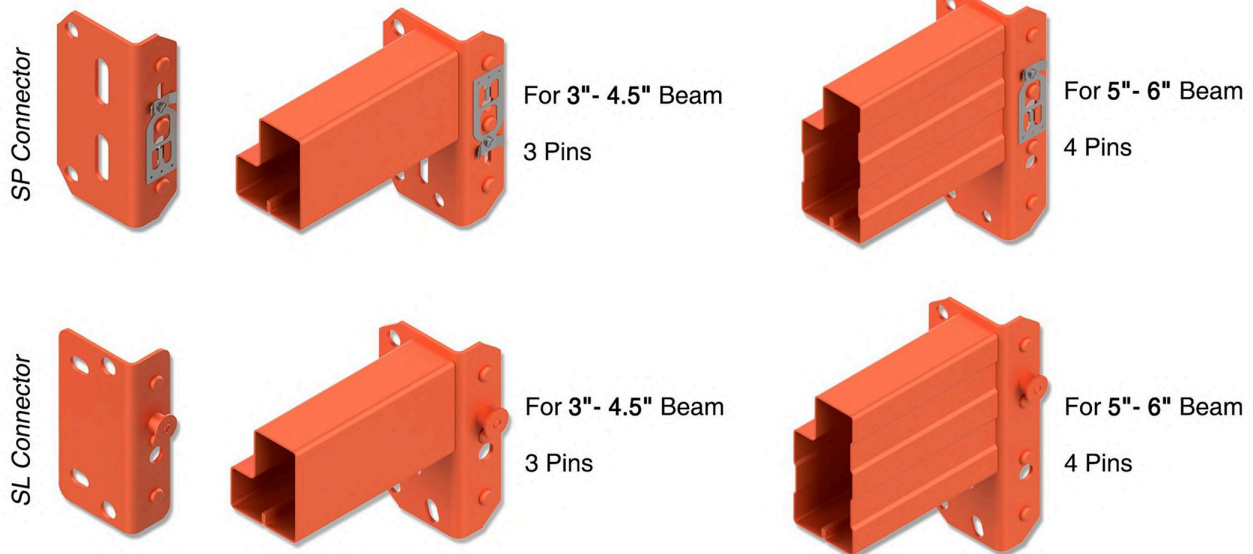
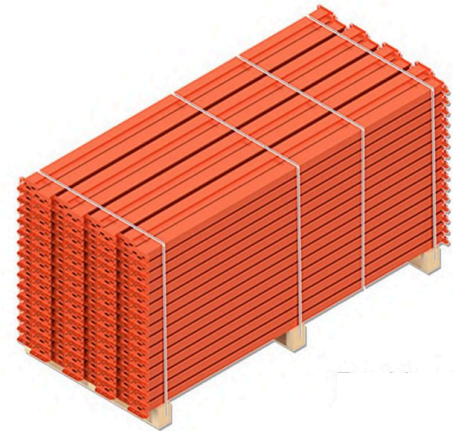
Bolted Baseplate

- 3"x5"
- 5"x8"
- 8"x8"

AMERICAN STANDARD TEARDROP PALLET RACKING

STEP BEAM

Step Beam is available in many profiles. Max capacity is up to 14,000 LBS/per pair calculated based on the requirement of the current RMI specification. The teardrop pallet racking provides a robust, patented, automatic lock for improved safety. Our safety lock has been pre-installed at the factory which provides positive beam-to-column engagement and improves installation work efficiency.



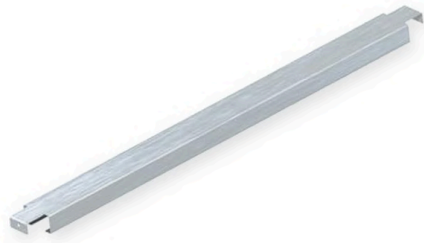
Dimension		Beam Loading Table (Lbs)							
		Beam Length							
		60"	72"	84"	96"	108"	120"	132"	144"
16Ga (1.5mm)	3"	4,426	3,530	2,593	1,986	1,569	1,271	1,050	882
	3.5"	5,620	4,683	3,775	2,890	2,284	1,850	1,529	1,285
	4"	7,013	5,844	5,010	4,027	3,182	2,577	2,130	1,790
	4.5"	8,346	6,955	5,962	5,216	4,277	3,464	2,863	2,406
	5"	9,900	8,352	7,159	6,264	5,568	4,569	3,776	3,173
	5.5"	9,900	9,776	8,379	7,332	6,517	5,827	4,816	4,047
15Ga (1.7mm)	3.5"	6,325	5,271	4,243	3,249	2,567	2,079	1,718	1,444
	4"	7,889	6,574	5,635	4,529	3,579	2,899	2,396	2,013
	4.5"	9,393	7,828	6,710	5,871	4,814	3,899	3,222	2,708
	5"	9,900	9,405	8,061	7,053	6,270	5,145	4,252	3,573
	5.5"	9,900	9,900	9,440	8,260	7,342	6,565	5,426	4,559
	6"	9,900	9,900	9,900	9,546	8,486	7,637	6,786	5,702
14Ga (1.9mm)	4"	8,750	7,292	6,250	5,024	3,970	3,215	2,657	2,233
	4.5"	9,900	8,688	7,447	6,516	5,343	4,327	3,576	3,005
	5"	9,900	9,900	8,952	7,833	6,962	5,714	4,722	3,968
	5.5"	9,900	9,900	9,900	9,176	8,157	7,293	6,027	5,065
	6"	9,900	9,900	9,900	9,900	9,431	8,488	7,542	6,337
14Ga (2.0mm)	6.25"								6,861

AMERICAN STANDARD TEARDROP PALLET RACKING

ACCESSORIES



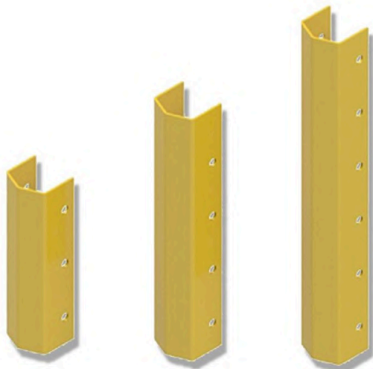
Row Spacer



Support Bar



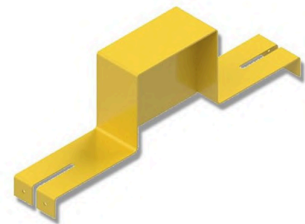
Wire Mesh Decking



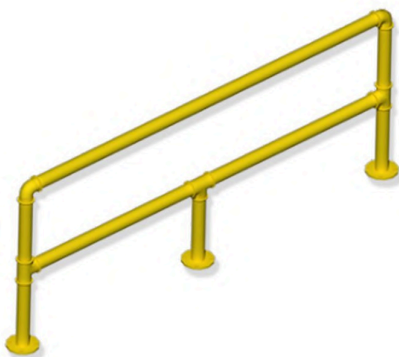
Upright Protector



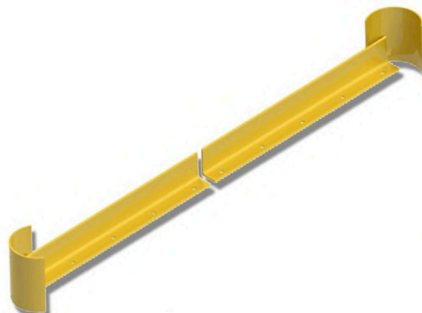
Floor Mounted Protector



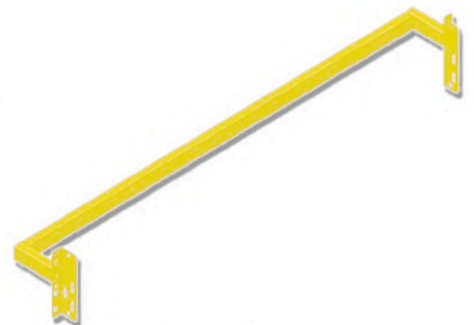
Pallet Stopper



Pipe Bump Protector



Barrier



Back Stopper

AMERICAN STANDARD TEARDROP PALLET RACKING

ACCESSORIES



Row Spacer

Size	Dimension
3" x 1 5/8" x 14Ga	L6"
	L8"
	L12"
	L18"
	L24"



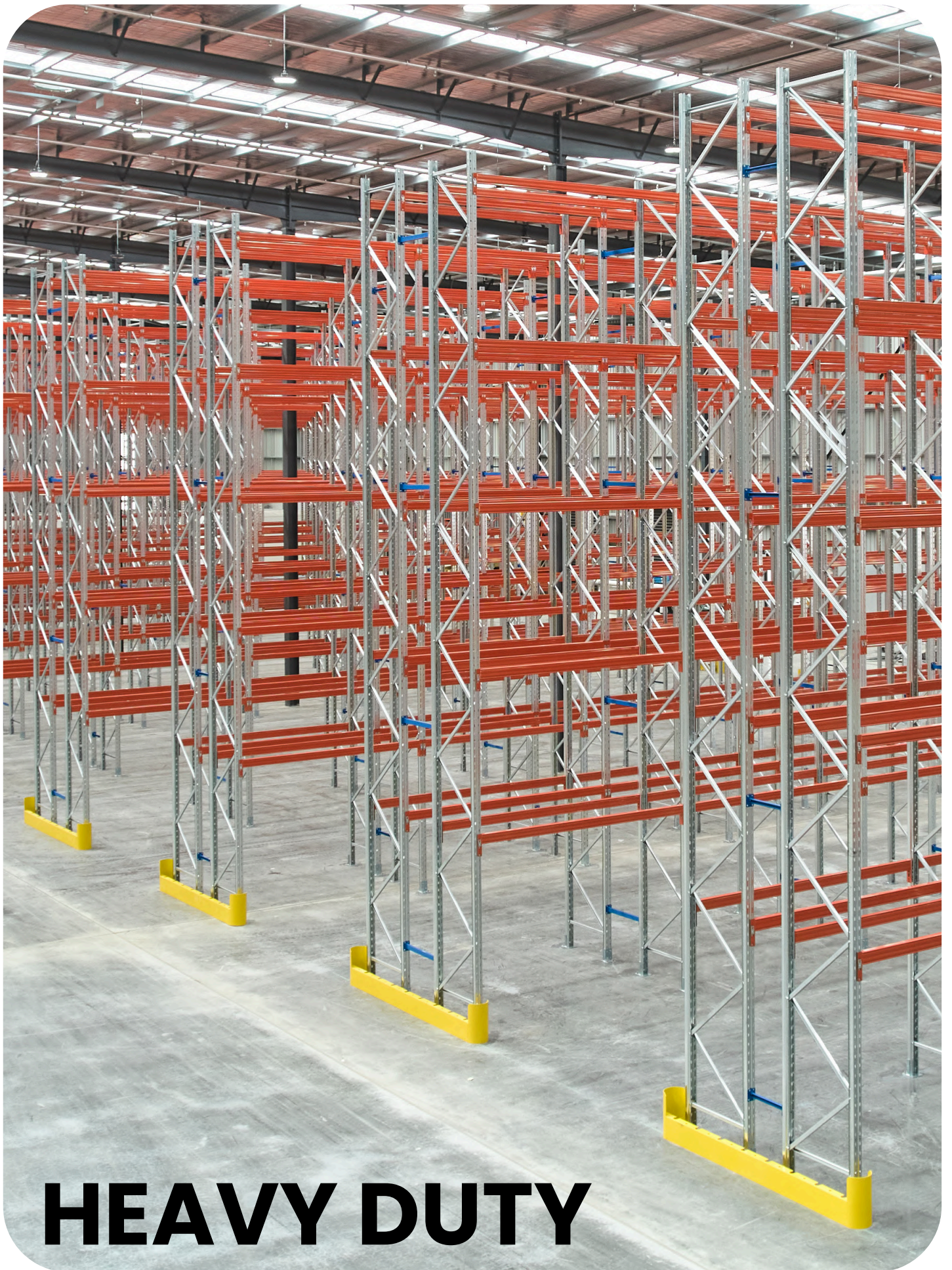
Support Bar

Size	Dimension
3" x 1 5/8" x 14Ga	D36"
	D42"
	D48"



Wire Mesh Decking

Capacity	Size	Dimension
3F 2,000 Lbs	Grid 4"x2.5"xφ5Ga &T16Ga	W46"xD42"
4F 2,500 Lbs	Grid 4"x2.5"xφ5Ga &T15Ga	W46"xD42"
4F 2,000 Lbs	Grid 4"x2.5"xφ5Ga &T15Ga	W46"xD48"
4F 2,500 Lbs	Grid 4"x2.5"xφ5Ga &T15Ga	W46"xD48"



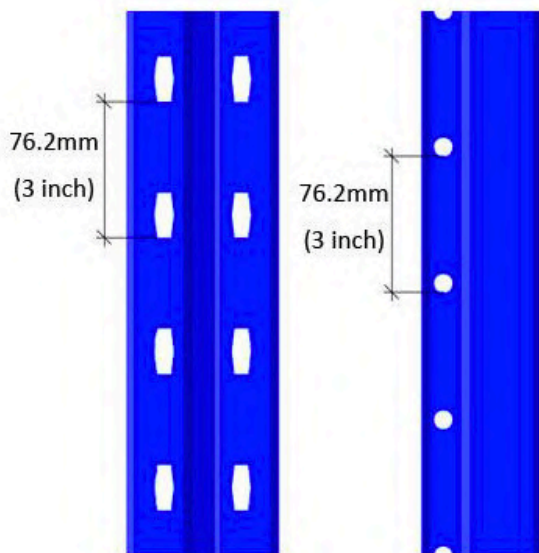
HEAVY DUTY **PALLET RACKING**

AUSTRALIAN STANDARD HEAVY DUTY PALLET RACKING

76.2 pitch pallet racking is the most popular and versatile racking in the industry. It offers the best solutions for warehouses with palletized products and a wide variety of goods. 76.2 pitch pallet racks are very popular in the markets of Australia and New Zealand. Our product ensures high quality standards according to AS 4084: Steel Storage Racking.

UPRIGHT FRAME

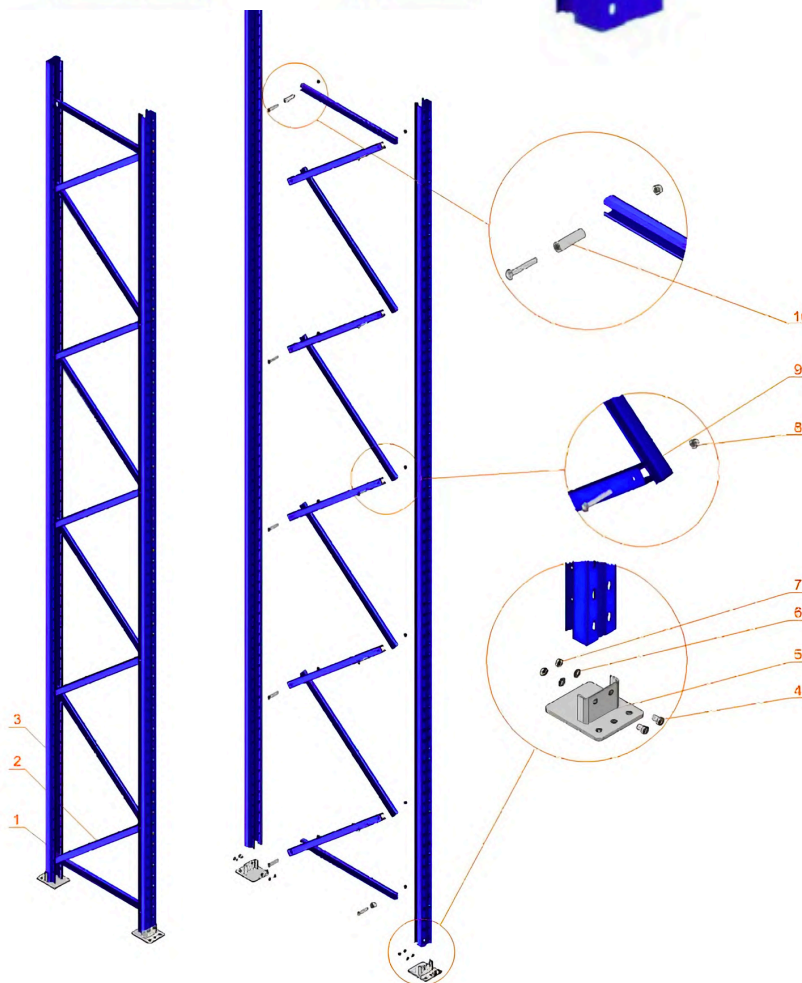
COMMON USED SIZE



M90 x 67 x 1.8/2.0/2.3

M100 x 67 x 2.0/2.3/2.5

M120 x 95 x 2.5/2.75/3.0



1. Horizontal Bracing
2. Diagonal Bracing
3. Upright Column
4. Bolt for Base-Column Connect
5. Base Plate
6. Bolt Washer
7. Nut Cap
8. Nut Cap for Bracing Connect
9. Bolt for Bracing Connect
10. Sleeve

AUSTRALIAN STANDARD HEAVY DUTY PALLET RACKING

BOX BEAM



3 Pins



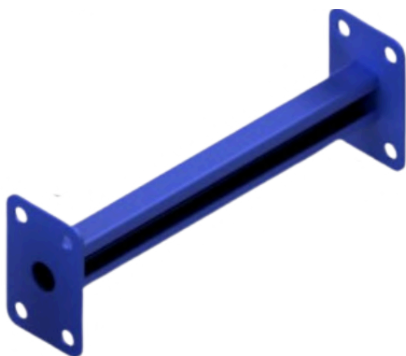
4 Pins



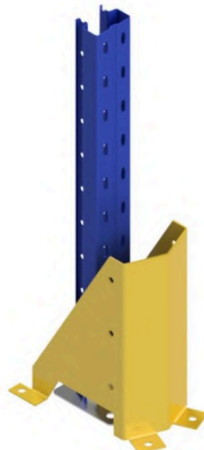
Safety Pin

Dimension	Beam Loading Table (Kgs)											
	Beam Length (mm)											
	1,372	1,524	1,829	2,133	2,591	2,743	3,048	3,350	3,658	3,810	4,200	4,500
80x50x1.5	3,781	3,404	2,836	2,432	1,689	1,507	1,220	1,010	847	781	643	560
90x50x1.5	4,000	3,690	3,074	2,636	2,059	1,837	1,488	1,232	1,033	952	784	683
100x50x1.5	4,000	4,000	3,623	3,107	2,558	2,406	1,949	1,613	1,353	1,247	1,026	894
110x50x1.5	4,000	4,000	3,893	3,338	2,748	2,596	2,303	1,906	1,599	1,474	1,213	1,057
120x50x1.5	4,000	4,000	4,000	3,478	2,863	2,705	2,434	2,167	1,818	1,675	1,379	1,201
140x50x1.5	4,000	4,000	4,000	4,000	3,340	3,155	2,839	2,583	2,366	2,271	1,876	1,634
160x50x1.5	4,000	4,000	4,000	4,000	3,908	3,691	3,322	3,022	2,768	2,657	2,411	2,185
160x50x1.8	4,000	4,000	4,000	4,000	4,000	4,000	3,898	3,547	3,248	3,119	2,829	2,565
160x50x2.0	4,000	4,000	4,000	4,000	4,000	4,000	4,000	3,959	3,626	3,481	3,158	2,863

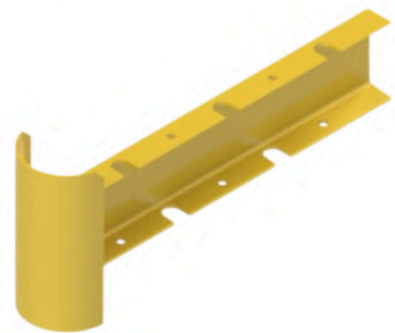
ACCESSORIES



Row Spacer

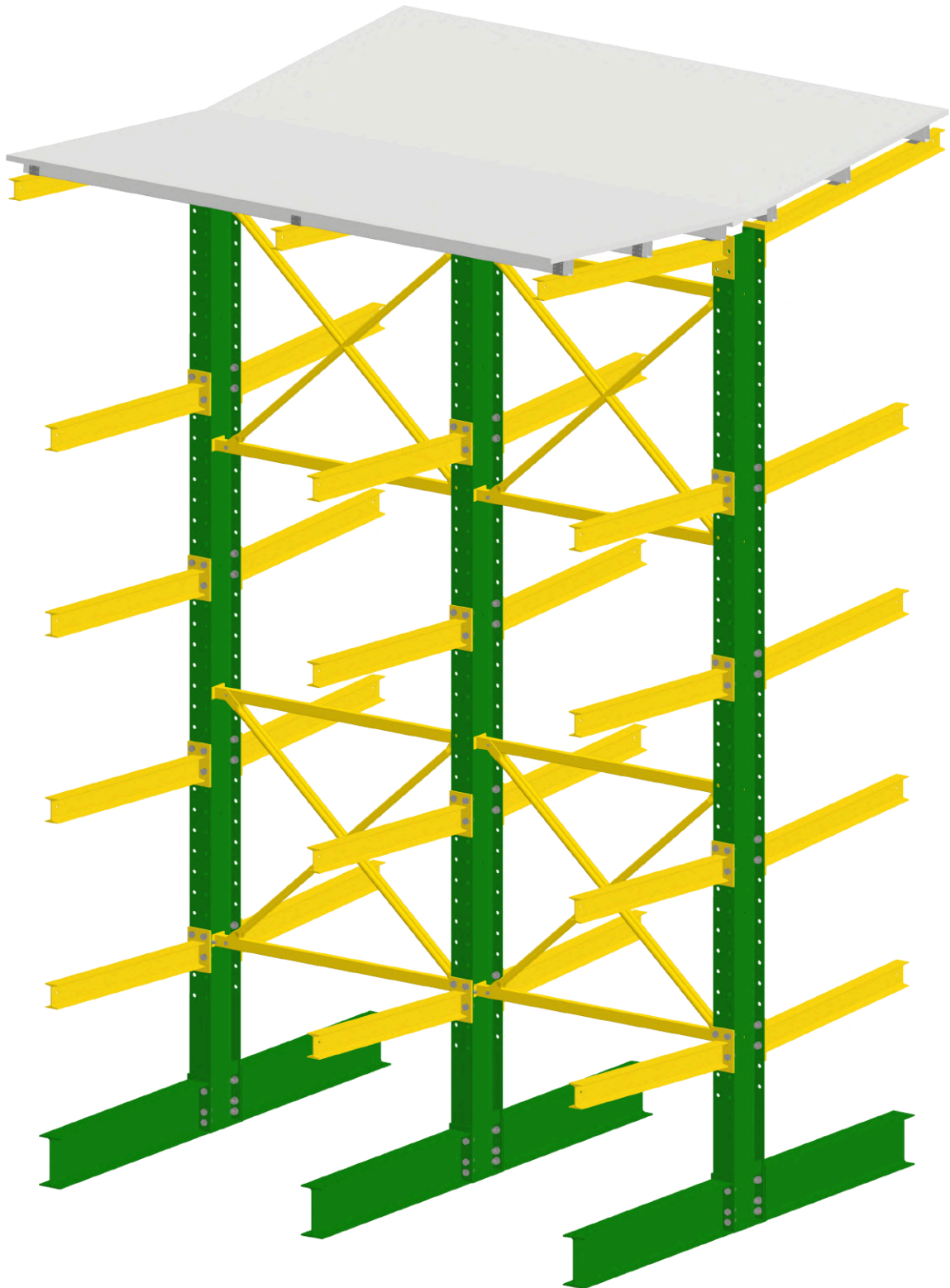


Upright Protector



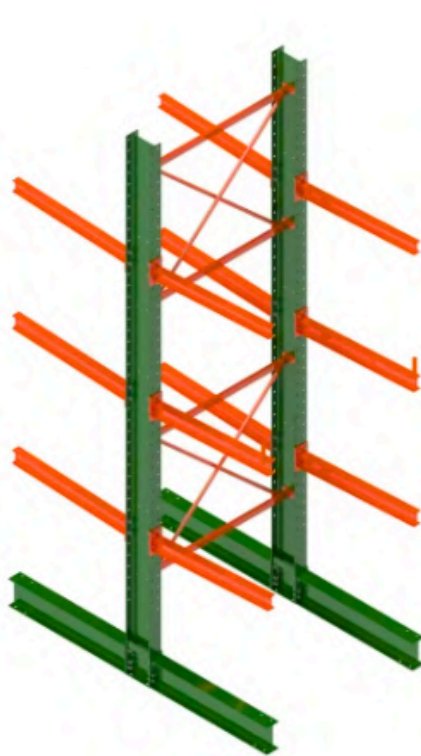
Barrier

CANTILEVER RACKING

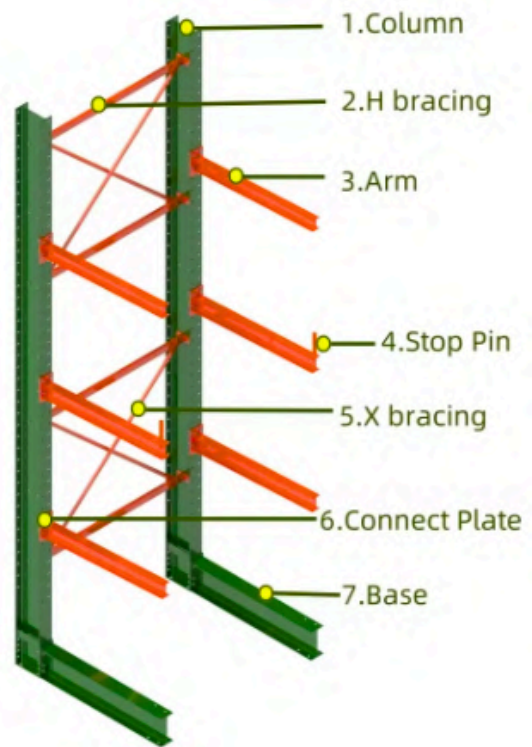


CANTILEVER RACKING

BHD Vietnam Cantilever Rackings offer multiple configurations, allowing flexible solutions for many storage needs. Cantilever racking is specifically designed for the storage of long, bulky items such as lumber, pipes, and steel bars. They can be used indoors or outdoors.



Double Sided



Single Sided

248x124x5x8 (W9.7")	Column Loading Table (Lbs)				
Height	Length				
	36"	40"	48"	60"	72"
8'	14,300	14,300	14,300	14,300	13,640
12'	12,980	12,980	12,980	11,880	9,900
16'	12,760	12,760	11,660	9,460	7,700
20'	12,320	11,660	9,680	7,700	6,600
24'	Technology Consulting				
28'					
32'					

CANTILEVER RACKING

298×149×5.5×8 (W11.7")	Column Loading Table (Lbs)				
Height	Length				
	36"	40"	48"	60"	72"
8'	20,000	20,000	20,000	20,000	19,100
12'	18,170	18,170	18,170	16,630	13,860
16'	17,860	17,860	16,320	13,240	10,780
20'	17,250	16,320	13,550	10,780	9,240
24'	10,450	9,410	7,830	6,270	5,240
28'	9,100	8,180	6,820	5,460	4,550
32'	Technology Consulting				

Dimension	Arm Loading Table (Lbs)			
	Arm Length			
	36"	40"	48"	60"
100x68x4.5 (4")	3,300	3,300	2,640	-
120x74x5 (4.7")	3,960	3,960	3,960	3,260
140x80x5.5 (5.5")	3,960	3,960	3,960	3,960

POWDER COATING COLOR OPTIONS

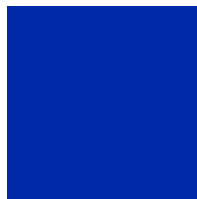
Green
RAL 6000



Orange
RAL 2004



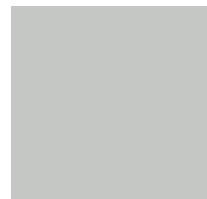
Blue
RAL 5017



Yellow
RAL 1023



Grey
RAL 7035



Standard Finish

- Powder Coating

Options Finish

- Hot-dip galvanized finish



REAL



CASES



PACKING



LOADING

We are dedicated to the **packing and loading** process because we aim to deliver the best products to our customers. We understand that careful packaging and transportation are about protecting the product's quality and creating the best experience for our customers. We believe that each of our products is not just an item but a part of the experience that our customers will remember and appreciate. Therefore, our dedication to the packing and loading process is how we demonstrate our commitment to customer satisfaction and trust.

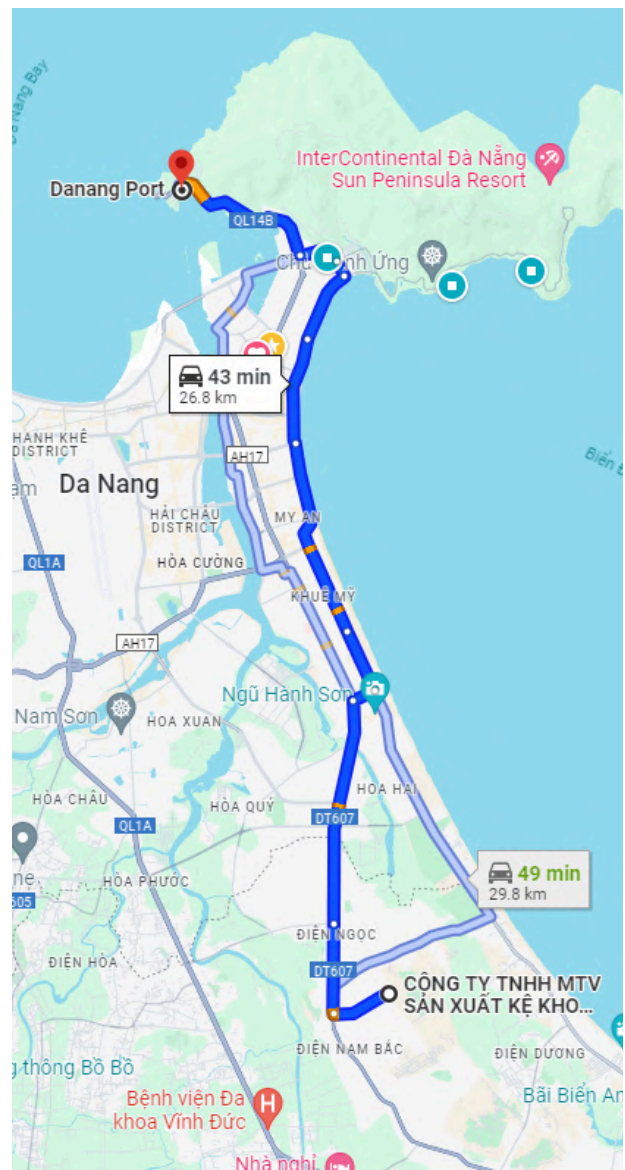
OUR ADVANTAGES



Only **45-minute** drive
From our factory-Da Nang port



Direct shipping lanes
From Da Nang port-Long Beach
port & Los Angeles port



FAQ

01 What is the production lead time of your factory?

It depends on your volume. Standard orders can be ready in 7-10 days. But when the volume is large, please communicate with our sales rep to arrange the quickest production.

02 What is the production capacity of your factory?

~ 120 containers/month

03 Are there any tariff or duties on your products to Australia?

We have a C/O (Certificate of origin) from Vietnam. So there are no tariffs or duties.

04 Can you customize racking systems based on our requirements?

Our factory has been completed as a whole in May 2019. You can see all the equipment and facilities in the FACTORY part of the website navigation. We sincerely welcome you to visit our factory.

05 What are the international trading terms provided?

EXW/FOB/CIF/DDU. In fact, we can do all the international trading terms.

06 Do you have product certifications for Australia?

Yes, we have the AS-4084 certification for Australia, meeting local market requirements.

07 What are the payment terms?

Generally, our payment terms are 30% T/T in advance as a deposit, and 70% T/T against a copy of B/L as a balance. If you have any special requirements, please contact our sales team.

08 How is the packaging of your products?

Our export packaging includes corrugated paper, carton boxes, crossties, pallets, angle steel, plastic film, steel ties, and air bags. We have extensive experience in export packaging to ensure product safety.

09 Do you offer samples?

Yes, we can provide samples upon request. Please contact our sales team for details on sample availability and shipping arrangements.

BHD

Storage Solutions

Lot No.20, Dien Nam Dien Ngoc IZ,
Quang Nam Province, Vietnam

www.palletrack.vn

sales@palletrack.vn